

X-POSH COLOR Series

CT1242AY#BL LEVER HANDLE BASIN FAUCET(TALL BODY)

Barcode 8852410124331

Material No. Z231CT1242AYBLXX15

Selling Point

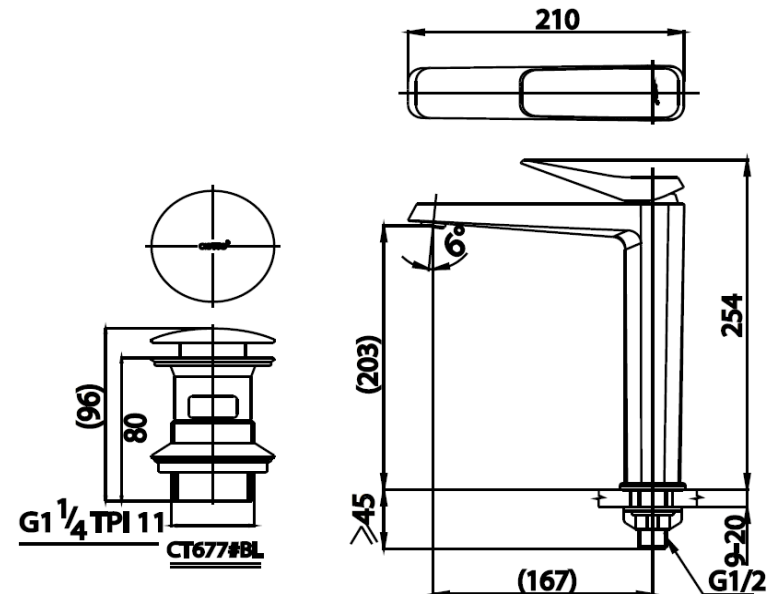
1. Exposing-steamlined Achitecture : Simplicity comes with dynamic sensibly. Each detail was designed to be encountered, comfort to contemporary and ultramodern bathroom
2. Cotto-CLEAN : Uncompromising made from excellent materials without Lead ,Cadmium or Heavy Metal. In order to ensure user's health from heavy metal exposure.
3. Jewel finishes : color coating with a special process make the bathroom stand out and unique
4. Soild Brass : Premium brass constructed with world-class brass manufacuer, to create bathroom masterpiece experience.

Product characteristics

- pices/box : 6
- Inner box weight (Kg.) : 2.2
- Total box weight (Kg.) : 13.9

Recommended Usage

Install On Counter For Above Counter Basin



Siam Sanitary Ware Co.,Ltd. / Siam Sanitary Fittings Co.,Ltd.

36/11 Viphavadee Rangsit Rd, Sanam Bin, Donmuang, Bangkok 10210. Thailand

Tel : + 66 (0) 2973-5040-54

Fax : + 66 (0) 2973-3470

www.cotto.co.th

Export Department

Tel : + 66 (0) 2973-5040-54

Fax : + 66 (0) 2973-3472

Center

(Donmuang ,Bangkok) : +66 (0) 2521-7777



The company reserves the right to change any of the details in the document without prior notice